

9/16 ACTIVE CASCADABLE MULTISWITCH

SMK-216A T-urbo-T



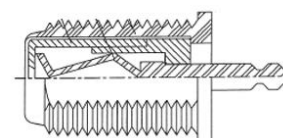
Our innovative multiswitch: **SMK-216A (T-urbo-T series)** is designated for use in collective antenna systems. It distributes the signal from **SWK-9216NGV** (from QUATTRO and DVB-T LNB's) but may also be aligned with the **WWK-9NGV** set.

It's main advantage is the ability to switch between the active and passive DVB-T modes, which allows adding additional amplifiers and easy calibration of trunk line.

SMK-216A is equipped with new type of click – on sockets (see the video attached). It's not only convenient for the installer but also ensures that all signal parameters are stable, even after multiple applications.



- Receives the signal from 2 satellites and terrestrial TV
- Serves up to 16 subscribers sockets
- Very high (over 35 dB) isolation between paths,
- Built in cable precorrection function (5 dB for the whole band)
- Vertical application that saves space (applies to multiswitches as well as to amplifiers and splitters)
- Active satellite TV signal path



Slot cross-section

TECHNICAL PARAMETERS

NAME/ PARAMETERS		SMK-216A	
Inputs	/	RTV	SAT
Frequency range	MHz	47-862	950-2150
Attenuation in pass through	dB	4,5	/
Attenuation in output	dB	24/0*	/
Through gain	dB	/	9
Tap gain	dB	/	7...11
Alignment/input reflection loss	dB	>15	>6
Alignment/output reflection loss	dB	>10	>8
Max. output level IMD3=60dB (RTV), IMD3=35db (SAT)	dB	95	94
Isolation (type)			
- SAT rec./ SAT rec.	dB		>30
- H/V			>35
- SAT/RTV			>30
Switching signals:			
- H / Low Band	V / kHz	/	16,5... / 0
- H / High Band			16,5...19 / 19...25
- V / Low Band			11,5...16 / 0
- V / High Band			11,5...16 / 19...25
			Tone Burst, DiSEqC 1.0
Input/ output impedance	Ohm	75	
Operating temperature range	°C (K)	-10...+50	
Power supply/ rating			
- LNB power turned off	V/mA/W	+12 /170/2,1	
- LNB power supply switched on		+12/960/11,5	
Dimensions	mm	48x246,5x248,5	
Weight	kg	1,02	
Package	/	box	

*amplifier switched on the radio TV circuit

All the T-urbo-T multiswitches are dedicated for the indoor use. This is why the equipment is vertically mounted as it perfectly saves the space foreseen for such type of installations. It's extremely useful if the whole equipment must fit a single telecom cabinet (see the picture on the right – **AIZ-210**) which is usually the case.



T-urbo-T multiswitches come together with the **AMK-SZ Hanger**. It's the universal rack that accommodates up to 7 devices and may be mounted inside the telecom cabinet or as an integral part of RACK 19" with a height in RACK units of 5U. Step by step installation is explained in the video below: <https://www.youtube.com/watch?v=n4paiHf4O4A>



The specifications are subject to change without prior notice

www.telmor.pl